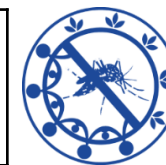


# Current Status of Dengue in Sri Lanka

As of 25.05.2026 midnight



<b>2026</b>	<b>31741</b>
May	6489
April	5652
March	6013
February	5721
January	7866

District/ Unit	No of Cases	%
Colombo	6709	21.14%
Gampaha	5284	16.65%
Ratnapura	2286	7.20%
Matara	2205	6.95%
Galle	2066	6.51%
Kalutara	1906	6.00%
CMC	1712	5.39%
Kandy	1434	4.52%
Hambantota	943	2.97%
Batticaloa	918	2.89%
Kegalle	895	2.82%
Kurunegala	822	2.59%
Kalmunai	595	1.87%
Jaffna	553	1.74%

District/ Unit	No of Cases	%
Puttalam	552	1.74%
Monaragala	419	1.32%
Trincomalee	394	1.24%
Matale	391	1.23%
Badulla	386	1.22%
NIHS	283	0.89%
Anuradhapura	244	0.77%
Polonnaruwa	240	0.76%
Ampara	215	0.68%
Nuwaraeliya	127	0.40%
Vavuniya	58	0.18%
Kilinochchi	41	0.13%
Mannar	40	0.13%
Mullaitivu	23	0.07%

Province	No of Cases	%
Western	15894	50.07%
Southern	5214	16.43%
Sabaragamuwa	3181	10.02%
Eastern	2122	6.69%
Central	1952	6.15%
North Western	1374	4.33%
Uva	805	2.54%
Northern	715	2.25%
North Central	484	1.52%

High-risk MOH Areas [Week 20, 2026]	<b>50</b>
--	-----------

Average Mid-night Total [Week 20, 2026]	<b>664</b>
--	------------

Dengue Deaths in 2026	<b>17</b>
Case Fatality Rate	<b>0.05%</b>

Source: NaDSys surveillance