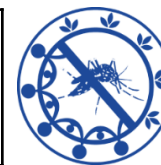


# Current Status of Dengue in Sri Lanka

As of 24.05.2026 midnight



<b>2026</b>	<b>31430</b>
May	6178
April	5652
March	6013
February	5721
January	7866

District/ Unit	No of Cases	%
Colombo	6654	21.17%
Gampaha	5230	16.64%
Ratnapura	2242	7.13%
Matara	2188	6.96%
Galle	2058	6.55%
Kalutara	1876	5.97%
CMC	1709	5.44%
Kandy	1410	4.49%
Hambantota	926	2.95%
Batticaloa	911	2.90%
Kegalle	884	2.81%
Kurunegala	817	2.60%
Kalmunai	592	1.88%
Jaffna	550	1.75%

District/ Unit	No of Cases	%
Puttalam	549	1.75%
Monaragala	415	1.32%
Matale	391	1.24%
Trincomalee	389	1.24%
Badulla	382	1.22%
NIHS	272	0.87%
Anuradhapura	243	0.77%
Polonnaruwa	237	0.75%
Ampara	216	0.69%
Nuwaraeliya	127	0.40%
Vavuniya	58	0.18%
Kilinochchi	41	0.13%
Mannar	40	0.13%
Mullaitivu	23	0.07%

Province	No of Cases	%
Western	15741	50.08%
Southern	5172	16.46%
Sabaragamuwa	3126	9.95%
Eastern	2108	6.71%
Central	1928	6.13%
North Western	1366	4.35%
Uva	797	2.54%
Northern	712	2.27%
North Central	480	1.53%

<b>High-risk MOH Areas [Week 20, 2026]</b>	<b>50</b>
--	-----------

<b>Average Mid-night Total [Week 20, 2026]</b>	<b>664</b>
--	------------

<b>Dengue Deaths in 2026</b>	<b>16</b>
<b>Case Fatality Rate</b>	<b>0.05%</b>

Source: NaDSys surveillance